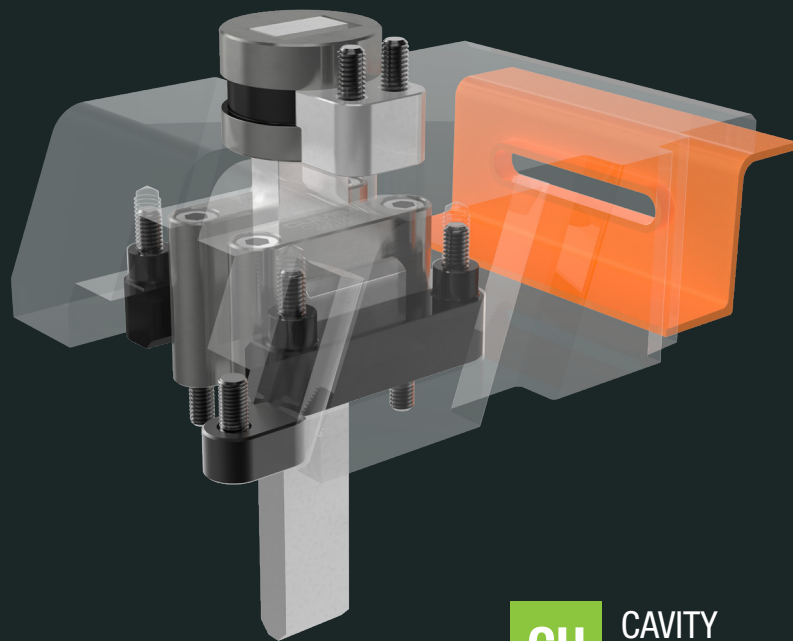


# CUMSA

INNOVATIVE SOLUTIONS  
FOR YOUR MOLDS

## SIMPLIFY COMPLEX CAVITY UNDERCUTS



**CU** CAVITY  
UNDERCUT

**100% MECHANICAL SOLUTION**

SLIDES

EN

# GREAT ADVANTAGES



## FULLY MECHANICAL SYSTEM

**Provides an alternative to other complex and hazardous mechanisms that are normally used like hydraulic or gas cylinders, which often create logistical challenges in mold storage.**



## UNMATCHED MOVEMENT CAPABILITY

**Both for straight and angled applications. Ideal for parts with undercuts that are difficult or impossible to demold from the core side of the mold.**



## NEW SYSTEM ADAPTABLE TO ANY SLIDE

**Enjoy total freedom of movement in slides, designed by the client or pre-existing ones, transforming challenging applications into easy ones!**



## SIMPLIFIED INSTALLATION AND SIZING

**Set-up and housings are simple and quick to do. Plus, it comes in a universal size, which can be adapted to fit almost any custom mold design.**

# ADAPTABLE CONCEPT TO ANY KIND OF SLIDE!



## 3 DIFFERENT COMPONENTS IN 3 DIFFERENT PARTS

Cavity Components



Core Components



Slide Components



## HOW DOES IT WORK?

Mold Closed



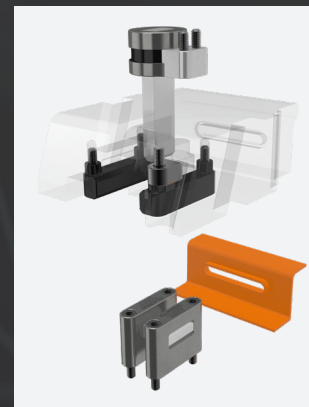
Molten plastic is injected into the mold, filling the cavity and taking its shape. Once the part is solidified and the mold is ready to open, the magic can begin.

1st movement

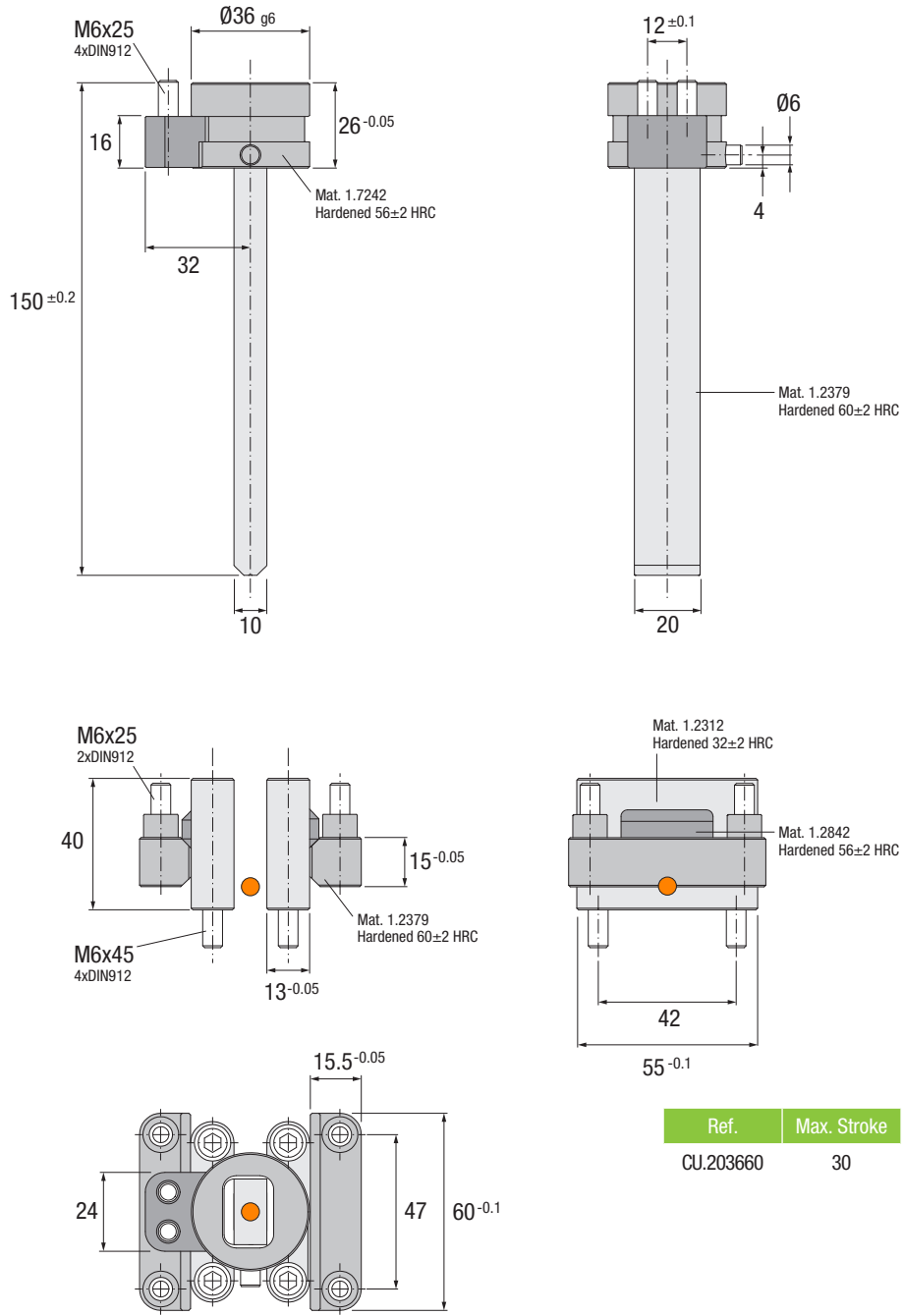


The slide shifts into its final position and stays open, releasing the undercut with precision.

2nd movement

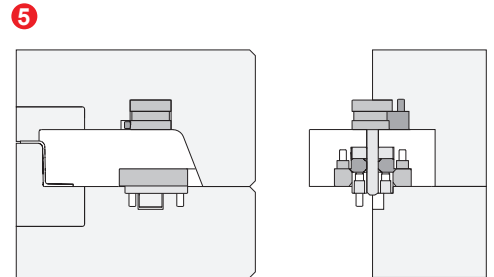
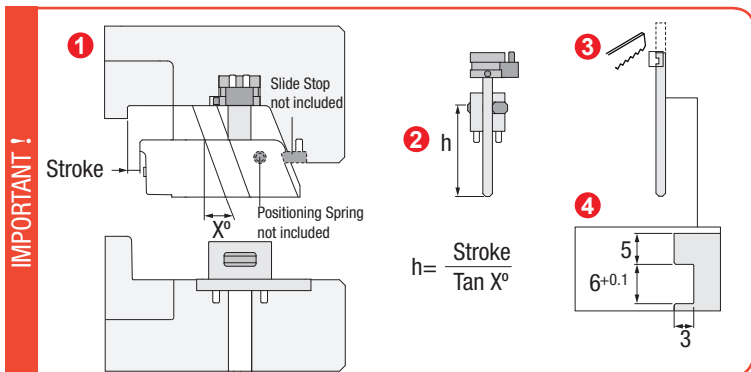


The mold continues to open, allowing the ejectors to release the plastic part. Once ejection is complete, the mold closes and the cycle starts again.



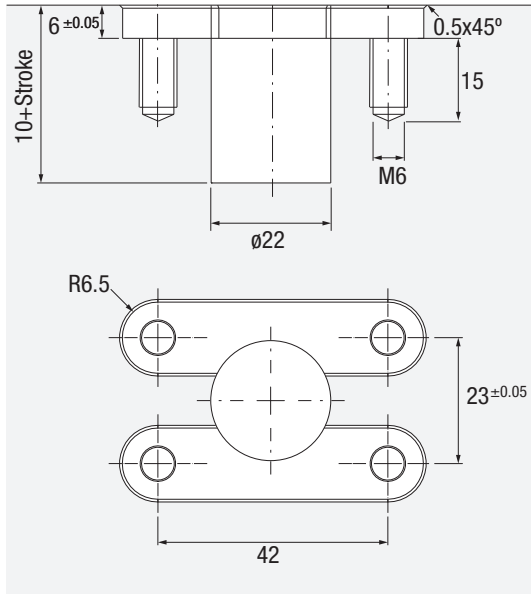
**Installation Guidelines**

Consejos de Instalación · Richtlinien zur Installation · Consigli di Installazione · Instruções de Instalação · Mode d'Installation



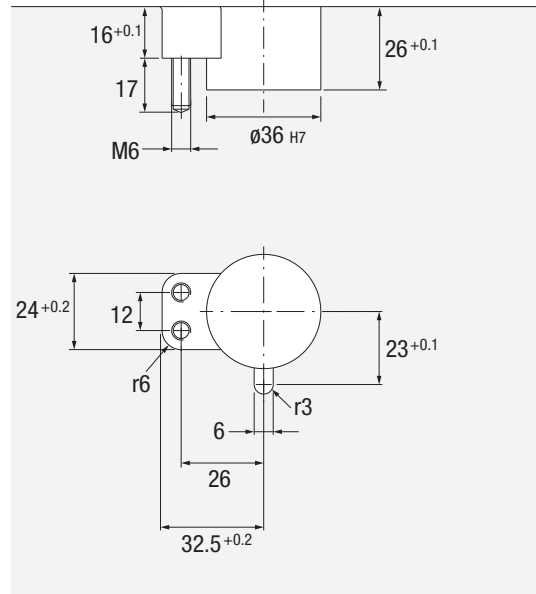
### Core Housing

Alojamiento Placa Punzón · Kerngehäuse · Sede nel Punzone  
Alojamento Bucha · Logement dans l'empreinte



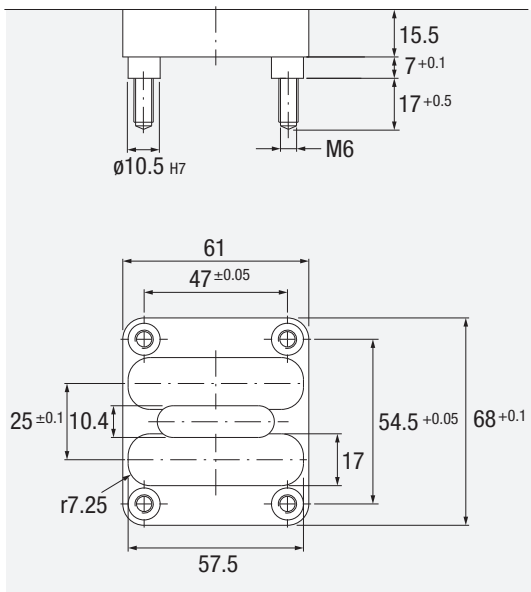
### Cavity Housing

Alojamiento Placa Cavidad · Kavitätsgehäuse · Sede piastra cavità ·  
Alojamento na Cavidade · Logement dans l'empreinte



### Slide Housing

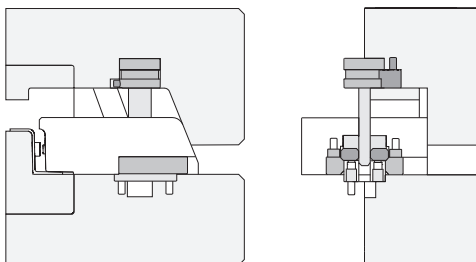
Alojamiento Corredera · Schiebergehäuse · Sede nel Punzone  
Alojamento Bucha · Logement dans l'empreinte



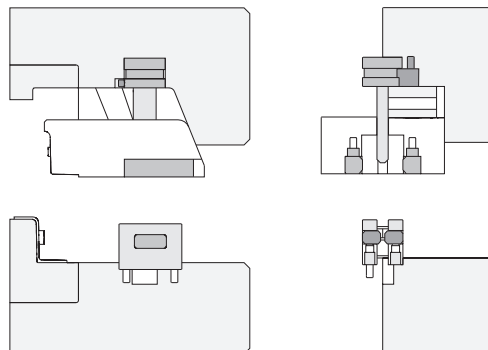
### Installation Guidelines

Consejos de Instalación · Richtlinien zur Installation · Consigli di Installazione · Instruções de Instalação · Mode d'Installation

6



7



# CUMSA

[www.cumsa.com](http://www.cumsa.com)

Ed. 2025 - 12

Isaac Peral, 21  
08960 · Sant Just Desvern  
Barcelona · Spain  
Tel: +34 93 473 25 52  
Fax: +34 93 473 49 19  
e-mail: [info@cumsa.com](mailto:info@cumsa.com)



The future  
**IS HERE**



**CUMSA**  
— USA —

Tel.: +1 248 850 8385  
e-mail: [info@cumsausa.com](mailto:info@cumsausa.com)

**EURO**  
**CUMSA**

Tel.: +351 244 770 420  
e-mail: [geral@eurocumsa.pt](mailto:geral@eurocumsa.pt)

**CUMSA**  
— ITALIA —

Tel.: +39 (0) 362 170 8735  
e-mail: [cumsaitalia@cumsa.com](mailto:cumsaitalia@cumsa.com)

**CUMSA**  
— 坤盛 中国 —

Tel.: +86 755 2998 5783  
e-mail: [cumsachina@cumsa.com](mailto:cumsachina@cumsa.com)

**CUMSA**  
— DEUTSCHLAND —

Tel.: +49 (0) 160 2611 003  
e-mail: [deutschland@cumsa.com](mailto:deutschland@cumsa.com)

**CUMSA ASIA PACIFIC Ltd.**  
Tel: +86 755 2823 6174

**NEED HELP INCORPORATING CUMSA PRODUCTS?**

Contact our team at [technical@cumsa.com](mailto:technical@cumsa.com) for a free project consultation.

