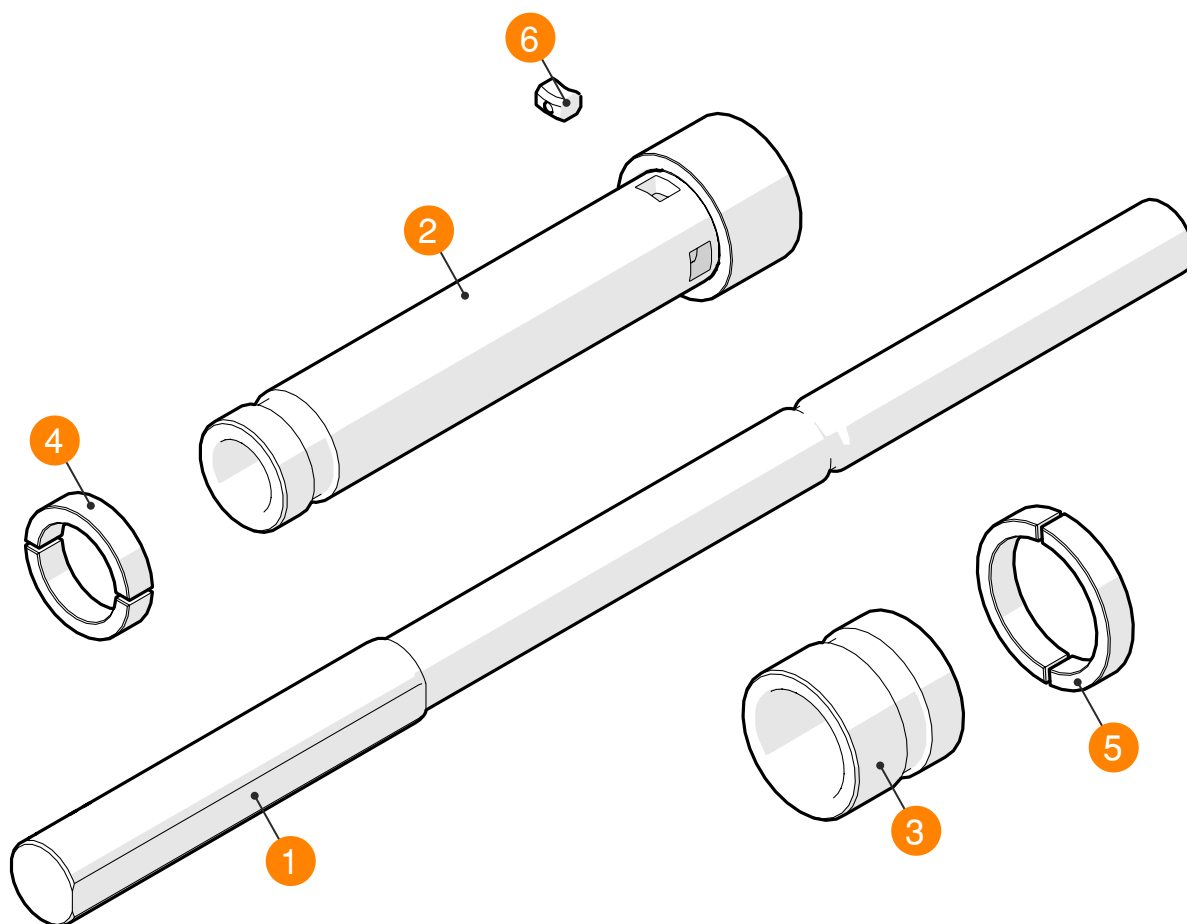


CUMSA

INNOVATIVE SOLUTIONS
FOR YOUR MOLDS



SPARE PART LIST: REAR DOUBLE EJECTOR - DY

ID	Description	DY.142825	DY.163230
1	Shaft	9DY142825-E	9DY163230-E
2	Lower Bushing	9DY142825-CI	9DY163230-CI
3	Plate Bushing	9DY142825-CP	9DY163230-CP
4	Small Flange	8DY140025-VAL (ø25)	8DY160028-VAL (ø28)
5	Big Flange	8DY140032-VAL (ø32)	8DY160036-VAL (ø36)
6	Cam Finger (x4)*	9DX142622-S	9DX163027-S

*Supplied individually