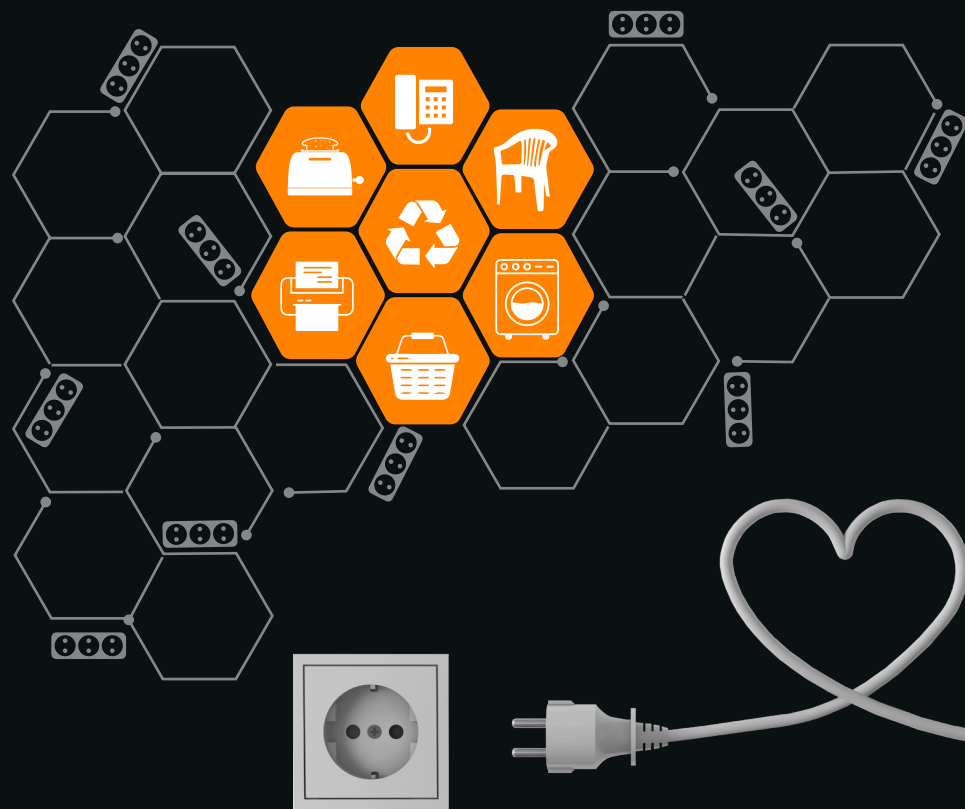


# CUMSA

INNOVATIVE SOLUTIONS  
FOR YOUR MOLDS

SOLUTIONS FOR

# SMART MOLDERS



# PARTING-LINE PHILOSOPHY

CUMSA's parting line philosophy is simple: it allows you to have better access to the core of the solution, so maintenance is **easier** and **faster**. No need to stop the production line for hours to make a small modification, with CUMSA's smart technologies, you'll have it done in no time!

LS



## LONG STROKE FOR SLIDES

100% mechanical solution designed for moving slides up to 150mm, without the use of inclined guides or hydraulic cylinders.

- Can be installed in any slide.
- Durability and reduced wear.
- Overall savings of 30%.
- Appropriate for automation.

DR



## DOUBLE RACK SYSTEM

The easiest, most versatile, and reliable way of releasing an undercut.

- Big-time savings, 76% less working hours on the ejector plates compared to traditional angle lifters.
- More robust and consistent mold plates.
- 8 different standard sizes to match any mold dimension and its requirements.
- Release undercuts up to 80mm.

KR



XR



BA



## EJECTOR BASES

Enables quick replacement of ejector pins and sleeves directly through the parting line, without removing the mold from the press.

- In less than 5 minutes, you can resume the production when an ejector pin malfunctions.
- Secure, reliable, great performance and fast to install and change.
- The BA model can be keyed for custom-shaped ejectors.
- Suitable for high temperatures up to 150°C.

BE



BT





## REMOTE DATE STAMP

- 100% Precision: Perfect positioning, no more misaligned markings.
- Cleanroom Ready: Change date stamps without parting line manipulation, keeping molds dirt-free.
- Cost-Effective: Update date stamps in less than 10 seconds - quick and efficient.
- External Updates: The only manual date stamp with visible external indications.
- Easy Adjustment: Included nut ensures perfect height for a clean finish.



## VACUUM SERIES

Complete solution to remove the air in the mold and achieve an improved production.

- Consistent filling of the part, less air bubbles.
- Significant energy savings due to less injection pressure needed.
- Higher quality of the injected parts.
- Color uniformity, decrease in sink marks.



## INSERT CHANGER

Swaps mold versions quickly and directly through the parting line.

- Simply apply air to the channel to change the insert without having to disassemble the mold or using any tools.
- Adjustable height ensures uniform, smooth results without variations.



## HIGH-PRESSURE AIR VALVE

Allows for the pneumatic ejection of plastic parts.

- Simplified press-fit installation makes it even easier to use and set up.
- Hardened stainless steel for trouble-free performance: long life, rust-free and smooth operation guaranteed.
- Developed for high pressure injection and high-speed cycles. It comes with a triple entrance to ensure a balanced opening.

## A FAMILY COMPANY



For over **four decades**, CUMSA has been a proud family-owned business delivering high-quality products and innovative solutions to mold makers worldwide. With a **global presence** that includes branches in the US, China, Italy and Portugal, as well as direct sales in Germany and Spain, our extensive distribution network ensures we're never far from you - no matter where you are in the world. CUMSA is your trusted partner in driving excellence across industries.

## OUR VALUES



Fully committed to customer satisfaction, our approach goes from pre-sales to post-sales services. Our product ranges from standardized to customized solutions that can be adapted to your project.

- Continuous investment in IT and quality control.
- Rigorous quality checks at every stage.
- Continuous employee training.

# CUMSA

[www.cumsa.com](http://www.cumsa.com)

Ed. 2026 - 04

Isaac Peral, 21  
08960 · Sant Just Desvern  
Barcelona · Spain  
Tel: +34 93 473 25 52  
Fax: +34 93 473 49 19  
e-mail: [info@cumsa.com](mailto:info@cumsa.com)



The future  
**IS HERE**



**CUMSA**  
— USA —

Tel.: +1 248 850 8385  
e-mail: [info@cumsausa.com](mailto:info@cumsausa.com)

**EURO**  
**CUMSA**

Tel.: +351 244 770 420  
e-mail: [geral@eurocumsa.pt](mailto:geral@eurocumsa.pt)

**CUMSA**  
— ITALIA —

Tel.: +39 (0) 362 170 8735  
e-mail: [cumsaitalia@cumsa.com](mailto:cumsaitalia@cumsa.com)

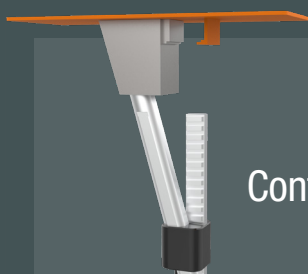
**CUMSA**  
— 坤盛 中国 —

Tel.: +86 755 2998 5783  
e-mail: [cumsachina@cumsa.com](mailto:cumsachina@cumsa.com)

**CUMSA**  
— DEUTSCHLAND —

Tel.: +49 (0) 160 2611 003  
e-mail: [deutschland@cumsa.com](mailto:deutschland@cumsa.com)

**CUMSA ASIA PACIFIC Ltd.**  
Tel.: +86 755 2823 6174



**NEED HELP INCORPORATING CUMSA PRODUCTS?**  
Contact our team at [technical@cumsa.com](mailto:technical@cumsa.com) for a free project consultation.