

# CAVITY UNDERCUT

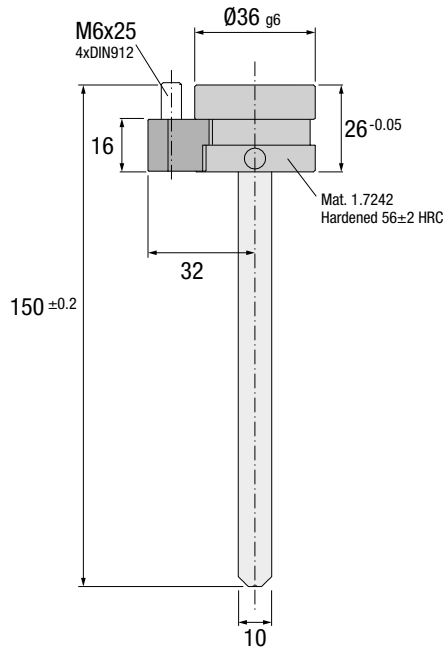
ES Corredera de Cavidad DE Kavität Hinterschnitt  
IT Sottosquadro in Cavità PT Negativo na Cavidade FR Glissière d'Empreinte

# CU

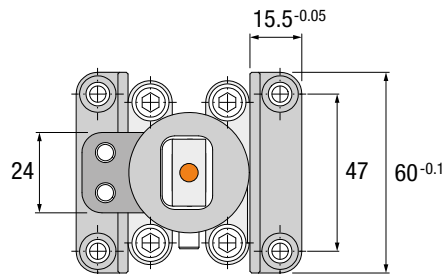
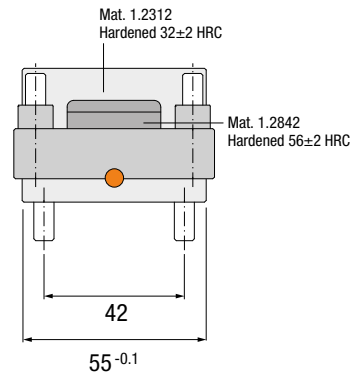
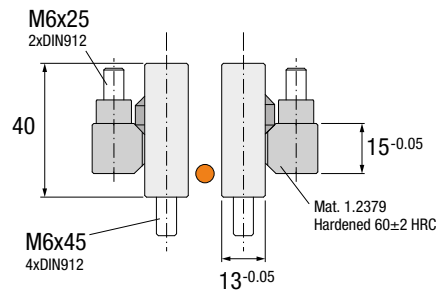
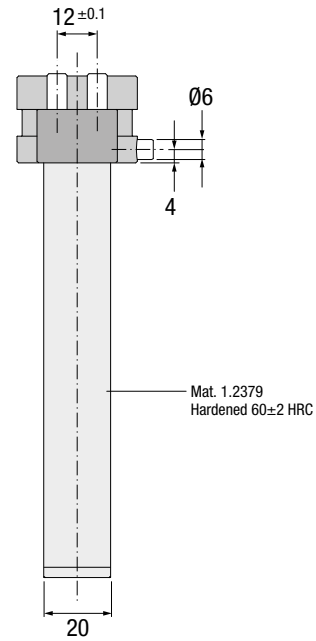
SLIDES



Patented



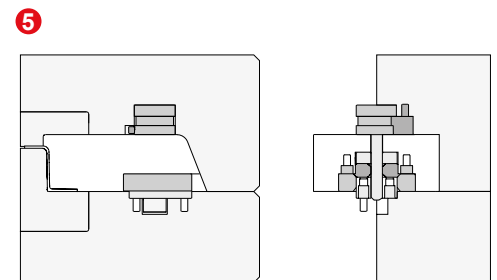
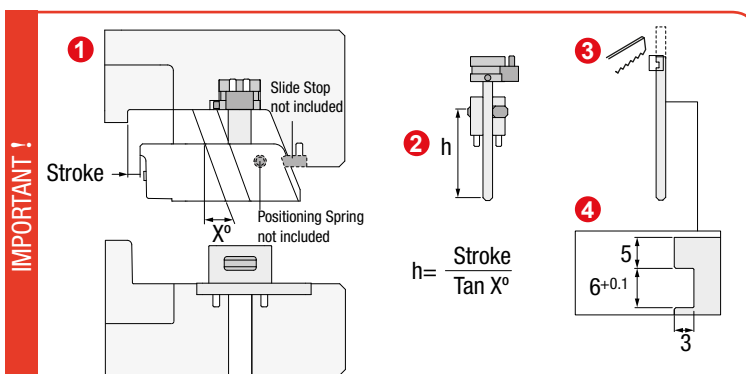
● Cad Insertion Point



Ref.	Max. Stroke
CU.203660	30

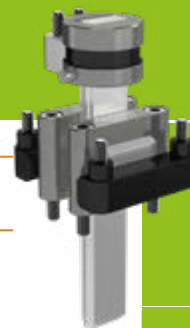
## Installation Guidelines

Consejos de Instalación · Richtlinien zur Installation · Consigli di Installazione · Instruções de Instalação · Mode d'Installation



# INSTALLATION GUIDELINES

ES Consejos de Instalación DE Richtlinien zur Installation  
 IT Consigli di Installazione PT Instruções de Instalação FR Mode d'Installation



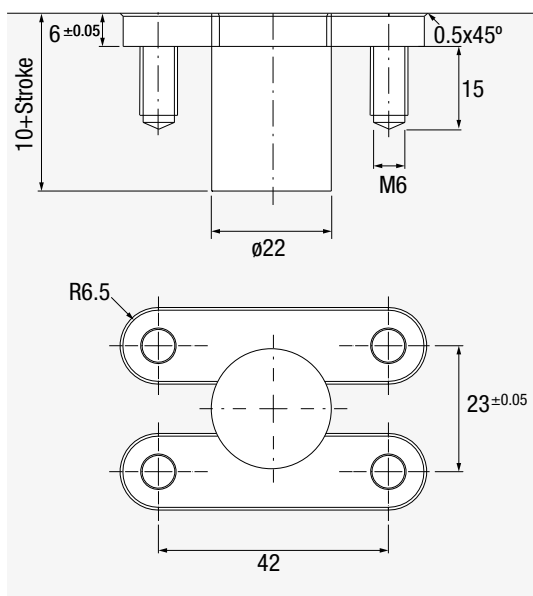
# CU

SLIDES

Patented  
 Max. 150°C

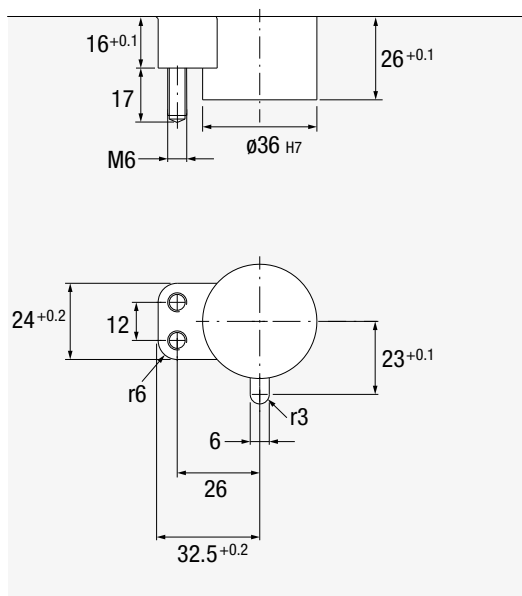
## Core Housing

Alojamiento Placa Punzón · Kerngehäuse · Sede nel Punzone  
 Alojamento Bucha · Logement dans l'empreinte



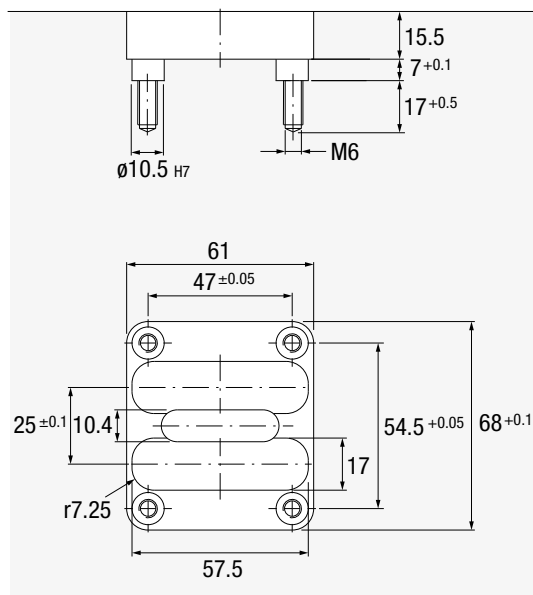
## Cavity Housing

Alojamiento Placa Cavidad · Kavitätsgehäuse · Sede piastra cavità  
 Alojamento na Cavidade · Logement dans l'empreinte



## Slide Housing

Alojamiento Corredera · Schiebergehäuse · Sede nel Punzone  
 Alojamento Bucha · Logement dans l'empreinte



## Installation Guidelines

Consejos de Instalación · Richtlinien zur Installation · Consigli di Installazione · Instruções de Instalação · Mode d'Installation

