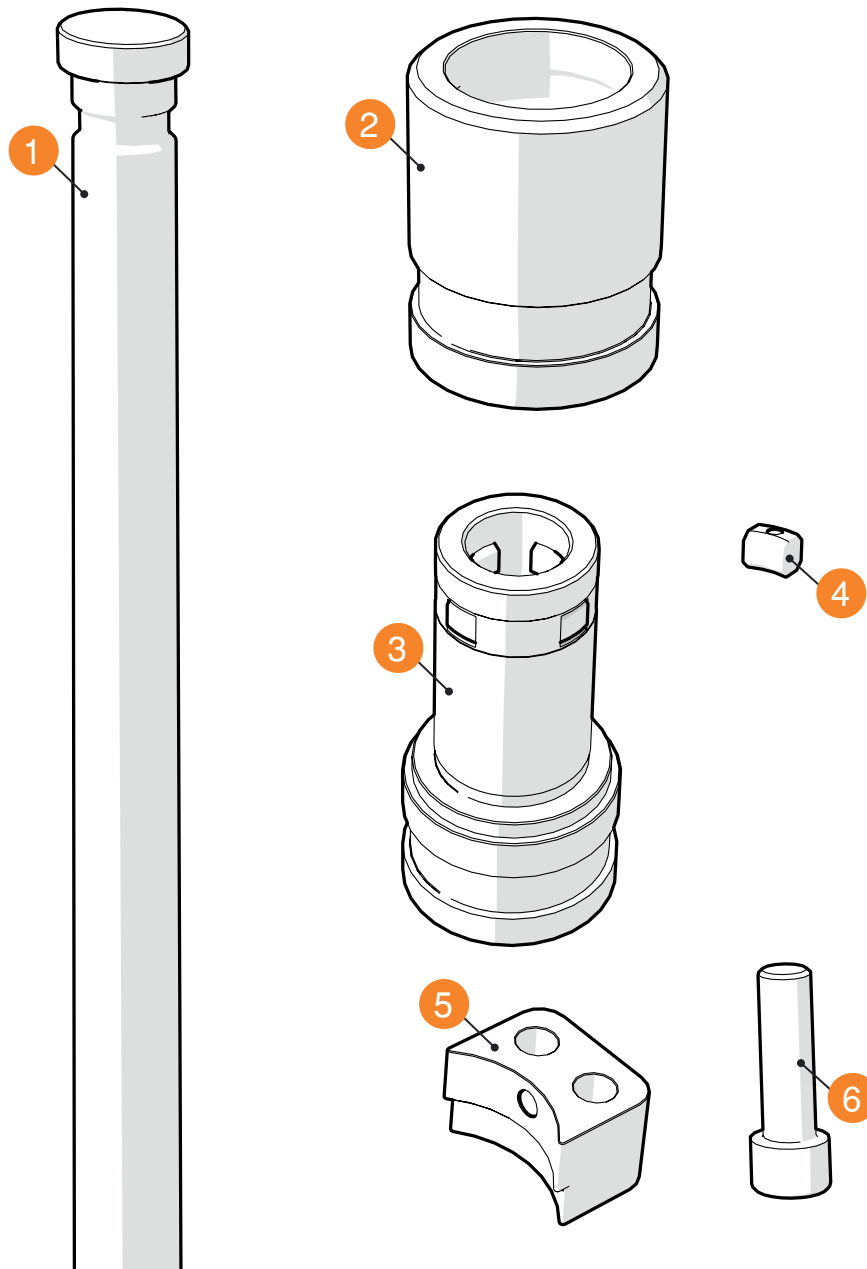


# CUMSA

INNOVATIVE SOLUTIONS  
FOR YOUR MOLDS



## COMPACT DOUBLE EJECTION - SY

ID	Description	SY.327054	ID	Description	SY.327054
1	Shaft with Stopper	9SY327054-E	4	Cam Finger (x4)*	9SY327054-SE
2	Top Bushing	9SY327054-CS	5	Bushing Fixing (x2)*	9BF503225
3	Bottom Bushing	9SY327054-CI	6	Screws (x4)*	1DIN9121240

\*Supplied individually