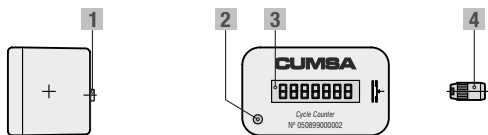


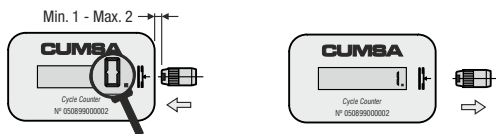
CYCLE COUNTER INSTRUCTIONS

INSTRUCCIONES CONTADOR DE CICLOS

Parts / Componentes



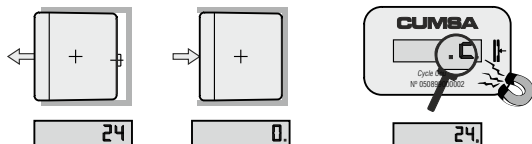
Installation & Counting / Instalación y funcionamiento



- 1 Security Switch / Interruptor de Seguridad
- 2 Partial Count / Contador Parcial
- 3 LCD Display / Pantalla LCD
- 4 Cycle Switch (IC) / Interruptor Ciclos (IC)

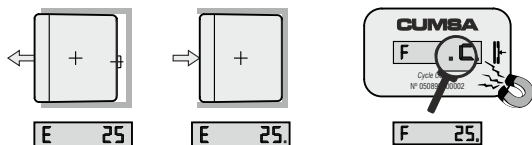
When installed a dot appears to the right of the number on the display. When the mold opens it adds a cycle.
 Cuando está instalado, se muestra un punto a la derecha del número. Cuando el molde abre, se añade un ciclo.

Test Mode (up to 24 cycles) / Modo Test (hasta 24 ciclos)



Up to the 24th cycle, the Cycle Counter can be removed without showing any error on the display.
 Hasta el ciclo 24, el contador se puede desinstalar o magnetizar sin mostrar error en la pantalla.

Production (after 25 cycles) / Producción (más de 24 ciclos)

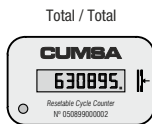
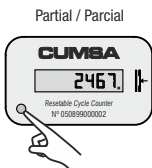


After the 25th cycle, if the Cycle Counter is removed an E appears on the display. An F appears if tampered with a magnet.
 Después del ciclo 25, si se desinstala, se muestra una E en la pantalla. Se muestra una F si se acerca un imán.

CYCLE COUNTER INSTRUCTIONS

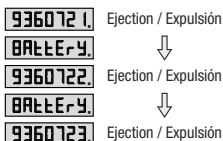
INSTRUCCIONES CONTADOR DE CICLOS

Partial count / Contador Parcial



Press once to see total count. Hold for 5 seconds to reset the partial count to 0.
Pulsar una vez para ver el total de ciclos, Mantener pulsado 5 segundos para poner a 0 el contador parcial.

Low battery / Pila baja



When a fixed Battery indication appears on the display, the battery needs to be replaced ASAP (within max. 15 days).
Si en la pantalla aparece Battery se debe reemplazar la pila rápidamente (antes de 15 días).

Dead battery / Pila agotada



or / o

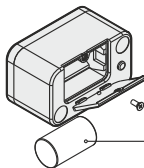
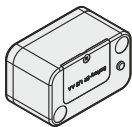


Information stored
Información guardada

9360725

When the Battery indication is flashing, the battery is dead and the Cycle Counter has stopped counting. The information is saved.
Si en la pantalla aparece Battery de forma intermitente, el Contador deja de sumar ciclos, pero se guarda la información.

Battery replacement / Sustitución de la pila



Battery model /
Modelo de pila:
ER 1/2 AA

If Battery indication is active or the battery dead, the E will not appear when the counter is removed to replace the battery.
Con la indicación Battery o la pila agotada, la E no aparecerá cuando se quite el contador para la sustitución de la pila.